



COMPANY PROFILE



ZIBO HONGWEI PLASTIC CO.,LTD.

Economic Development Zone, Zichuan District, Zibo City,
Shandong Province, China.

(2022)



ZIBO HONGWEI PLASTIC CO.,LTD.

● Company Profile

Zibo Hongwei Plastic Co., Ltd. (formerly Kelida corporation) is one of the earliest and specialized manufacturer in producing plastic products in China. We mainly produce and export products :

- (1) PP Corrugated sheet / Corflute Sheet
- (2) PP Hollow Plastic Formwork
- (3) PVC Foam Board
- (4) Plastic Packing



Total production capacity 20,000 tons per year. Our company and products passed the CIC、SGS certification etc. Especially in the area, our company participated in making and revising National and Industrial Standards .Products are exported to Germany,Japan,Australia,Pakistan more than 20 countries.



● PP Hollow Plastic Formwork

PP hollow Plastic formwork is a successful innovation of construction material and has been accepted by many countries. The pp hollow plastic formwork can reach more than 60 reusable times, No need mold release agent, Nailed easily and stably etc. It's Green, Energy Efficient and Economical.

The product is widely applied in many areas
Instead of wood and Bamboo such as :

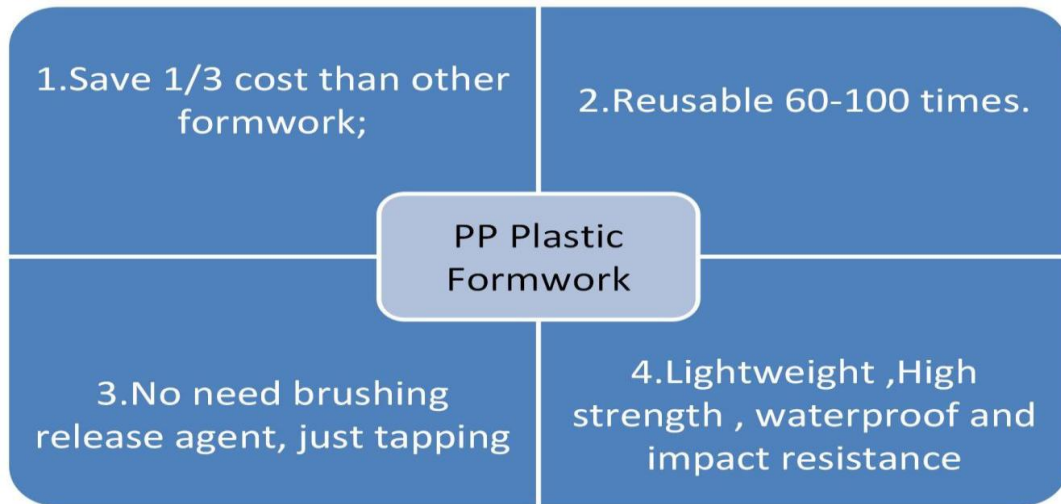
- (1) Construction
- (2) Hydraulic engineering
- (3) Water-power engineering
- (4) Bridge and Tunnel project,





ZIBO HONGWEI PLASTIC CO.,LTD.

● Product Superiority



1. Light weight. Plastic hollow formwork is Light weight, high strength, high hardness, impact resistance and wear resistance.

2. Surface is smooth. Its surface is smooth, bright and clean; Concreting and forming effect is very good .

3. Easy to demould. No need to brush the release agent, just tap, plate template falling off, effectively shorten the working time, speed up the construction progress.

4. Easy to process. Sawing, drilling and nailing are all available. Formwork system can be combined vertically and horizontally optionally.

5. Easy to remove. Removing is convenient, quick and safe, and the supporting is also easy to operate, advantageous to the organization construction, effectively improving the construction schedule.



ZIBO HONGWEI PLASTIC CO.,LTD.

● Contrast Diagram

PP Hollow Plastic Formwork VS Other Formwork				
Items Compared	PP Hollow Formwork	PVC Formwork	Wooden Formwork	Aluminum Formwork
Price (usd/m²)	13.3	11.9	5.6	126.9
Recycle (times)	60-100	20-30	4—6	80-100
Drop Test (10m)	✓ Unbroken	Slightly damaged	× cracked	× destroyed
Wear Resistance	✓	✓	×	✓
Water Immerse	✓ No deformation	✓ No deformation	× Out of shape	✓ No deformation
Release Agent	✓ No need	✓ No need	× Need	× Need
Nailing	Easy to nail and stable ✓	× Unstable	✓	×
Expansion shrinkage	✓ Very tiny	× Big change	✓ a little	✓ a little
Enviornmental	✓	✓	×	✓
Weight (kg/m²)	9	13	7.2	25
Residual value (usd/m²)	24	18	1	200
Purchase Price Allocation	0.22	0.6	1.12	1.59
Optimal Choice	✓	×	×	×

● Specifications

Thickness	Size	Weight (kg/pc)
12mm	915mm × 1830mm	12-13kgs
	1220mm × 2440mm	22-23kgs
15mm	915mm × 1830mm	13-14kgs
	1220mm × 2440mm	24-25kgs
18mm	915mm × 1830mm	14-15kgs
	1220mm × 2440mm	25-26kgs
OEM & Customization acceptable		



● General Operation Notes



- (1) Method of use as well as wooden formwork, plastic hollow formwork reinforcement direction with batten direction placed in cross shaped.
- (2) When cast-in-place the flat plate, spacing between the keels should be 20 ~ 25 cm, and the spacing between the wall plate and keel should be 10 ~ 20 cm.
- (3) Hongwei plastic formwork board system do not need releasing agent.
The seam-line between formwork boards should be taped.
- (4) The length of nail generally about 30 ~ 35 mm. The strength to drive nails should be moderate.
- (5) When removing the board formwork, please start from the small part of one end; the support and the plates should be removed at the same time aiming at preventing the template widespread drops. Don't let the corner drop on the ground vertically.
- (6) The formwork board system accesses to be mixed used with wood veneer, bamboo veneer and other material plate.



国家化学建筑材料测试中心

National Test Center of Polymer and Chemical Building Materials

Items		Technical Requirements (PP hollow plastic formboard)	Inspection Results			Test Standard
			12mm	15mm	18mm	
Shore Hardness (D)		≥58	64	65.5	69	GB/T2441-2008
Impact Strength (KJ/m2)		≥30	32.2	33.7(C)	35.8	GB/T1043.1-2008
Rate of Change with Heat (%)	Transverse	±0.2	-0.1	-0.1	-0.1	JG/T418-2013 7.2.7
	Longitudinal	±0.2	-0.1	-0.1	-0.1	



ZIBO HONGWEI PLASTIC CO.,LTD.

● Construction Site Display



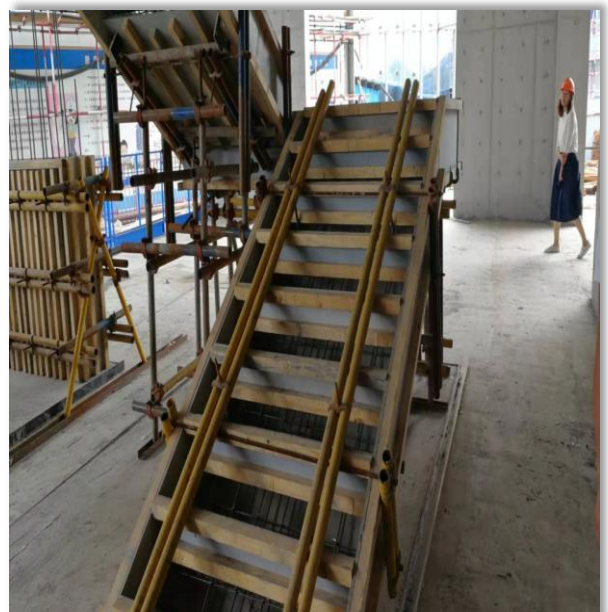
Roof Form Erecting



Column Form Erecting



Wall Form Erecting



Stairs Form Erecting



ZIBO HONGWEI PLASTIC CO.,LTD.

● Demoulding Effect Display



Shear Wall Structure



Column



Roof & Beam



The surface is smooth and clean



ZIBO HONGWEI PLASTIC CO.,LTD.

OUR CERTIFICATE



MA 180002240585

MAC-MRA

CNAS 中国认可 国际互认 检测 TESTING CNAS L1049

检 验 报 告

报告编号: 2019(C)01021

样品名称: 中空塑料建筑模板

委托单位: 淄博宏威塑胶有限公司

检验类别: 委托检验

国家化学建筑材料测试中心

材料专用章

SGS

Test Report No. TSNEC1900213301 Date: 21 Feb 2019 Page 1 of 5

ZIBO HONGWEI PLASTIC CO.,LTD
WANGNANG COMMUNITY, ZICHUAN ECONOMIC DEVELOPMENT ZONE, ZIBO CITY, SHANDONG PROVINCE

The following sample(s) was/were submitted and identified on behalf of the clients as : PLASTIC HOLLOW BOARD

SGS Job No.: TP19-000989 - TJ

Date of Sample Received: 18 Feb 2019

Testing Period: 18 Feb 2019 - 20 Feb 2019

Test Requested: Selected test(s) as requested by client.

Test Method: Please refer to next page(s).

Test Results: Please refer to next page(s).

Conclusion: Based on the performed tests on submitted sample(s), the results of Lead, Mercury, Cadmium, Hexavalent chromium, Polybrominated biphenyls (PBBs), Polybrominated diphenyl ethers (PBDEs) and Phthalates such as Bis(2-ethylhexyl) phthalate (DEHP), Butyl benzyl phthalate (BBP), Dibutyl phthalate (DBP), and Diisobutyl phthalate (DIBP) comply with the limits as set by RoHS Directive (EU) 2015/863 amending Annex II to Directive 2011/65/EU.

Signed for and on behalf of
SGS-CSTC Standards Technical Services (Tianjin) Co., Ltd.

Rebecca Zhou
Approved Signatory

Member of the SGS Group (SGS SA)



ZIBO HONGWEI PLASTIC CO.,LTD.



● Packing and shipping

Packing	Covered with PE film or carton boxes on pallet with belts.
Delivery time	Usually 7-21 days since receipt of PO and down payment.
Freight	Sea transportation (FCL & LCL)
Special size	We provide cutting services for special sizes





ZIBO HONGWEI PLASTIC CO.,LTD.

CUSTOMER VISITS

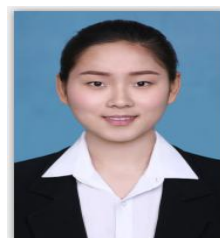


● Contact:

胡悦

Alena Hu

Export Department



淄博宏威塑胶有限公司

ZIBO HONGWEI PLASTIC CO., LTD.

Add: Zichuan District, Zibo City, Shandong Province China.

Tel: +86-533-3160580 Mob /Whatsapp: +86-15853378382

Wechat: +8615853378382 Web: www.zbhwplastic.com